

Strang's Rotary Grain Cleaner Ltd.

SEND YOUR ORDERS OR WRITE FOR INFORMATION TO OUR OFFICE

136 Fifteenth Ave. East, Calgary, Alberta

DO IT WHILE YOU THRESH

YOU KNOW YOU HAVE NEEDED THIS FOR YEARS—HERE IT IS !
ABSOLUTELY THE BEST CLEANER AND LOADER IN THE MARKET

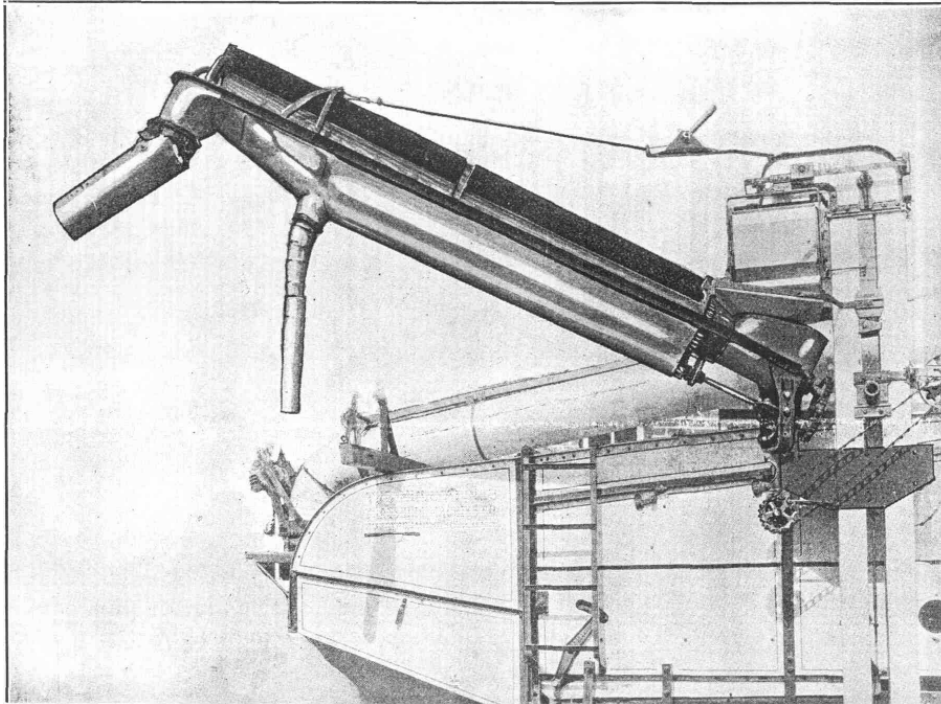
RAISE YOUR GRADE

WILL
ELEVATE TO
AN ANGLE OF
30 DEGREES

ENDORSED BY
EVERYONE
WHO HAS
USED IT.

INCREASES
YOUR
PROFITS

Feed your dockage
on the farm to the
famous mortgage
lifter (the hog).
Make a three-fold
profit by saving the
feed-freight-and-ha-
ndling charges, also
raise your grade



WILL NOT
CRACK
GRAIN

WILL SAVE
YOU MONEY

Power is obtained
from an extra
sprocket on the Jack
shaft that drives your
present elevator,
about ½ H.P.

USE IT ON
HAILED AND
FROSTED
CROPS AND
RAISE YOUR
GRADE.

Capacity for any
Separator

THE STRANG ROTARY GRAIN CLEANER SEPARATOR ATTACHMENT

Canadian Patents Nos. 257385 and 257780, and U.S. Patents

Can be attached to any Separator, and easily attachable to high or low elevator. Removes dockage and wild oats WHILE YOU THRESH, after being weighed. Swings in a radius of three quarters of a circle. Delivers cleaned grain ten feet away from separator at an elevation of from 8 ft. to 11 ft.

Saves time and labor every time you handle your grain. Saves the dockage for your stock instead of costing you real money to get rid of it. Saves cost of hauling dockage to elevator, handling charges and freight to Ft. William.

Your weigher discharges into the hopper shown, where it is picked up by the screw conveyor and carried through a spiral wound cylindrical wire screen (European design) which revolves in the opposite direction. The higher it elevates the better it cleans.

We stock three sizes of screens. Extra screens will be supplied at reasonable extra cost. These screens are easily changed in about 15 minutes.

Permits loading cleaned grain into wagon on either side or at back of your separator. A small auger conveyor delivers the dockage to a separate spout.

The screen is 7½ feet long and the frame is made of twelve rods and is wound with an endless No.16 gauge steel spring galvanized wire. There is a clearance of 3-8 in. between the conveyor and the screen, and it does not crack the grain.

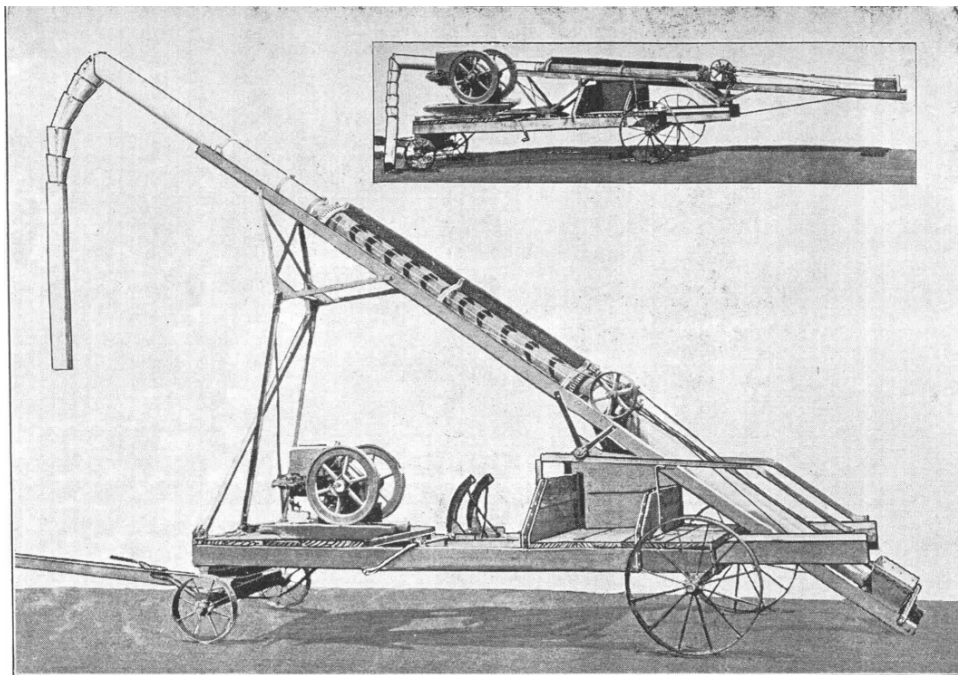
MADE IN CANADA TO HELP THE CANADIAN FARMER

Strang's Rotary Grain Cleaner and Loader

3 **A LOADER, CLEANER and GRAIN TREATER** **3**
IN LOADS and CLEANS GRAIN WITH A CAPACITY
OF 400 BUSHELS PER HOUR IN

1 WILL PAY FOR ITSELF YEARLY ON AN AVERAGE SIZED FARM, ELIMINATING
HANDLING CHARGES AND LABOR, AND REDUCING DOCKAGE TO A MINIMUM. **1**

Built for a Lifetime of Service



Canadian Patents Nos. 257385 and 257780, and U.S. Patents

This Cleaner and Loader is especially designed to clean and elevate grain into elevated portable bins, such as are used in connection with combine harvesters, also to fill portable granaries through an opening in the top.

This machine has a capacity for cleaning, loading and elevating of 4 hundred bushels per hour, with a maximum elevation of 15 feet. It can also be used as a wagon loader from a bin, or from a wagon to a bin. A hopper for unloading a wagon is supplied with each machine. One man can raise or lower it easily.

We recommend a 3 h.p. engine for the successful operation of this machine.

The cleaning and elevating system in the construction of this machine is the same as used in all our other cleaners and loaders. An auger conveyer throughout, screen rotating opposite.

The machine is also mounted on a platform, self-contained, 5 feet wide and 11 feet long, and can be easily moved from place to place as desired, but does not let down.

Manufactured and Sold Exclusively by

Strang's Rotary Grain Cleaner Ltd.

136 Fifteenth Ave. East

Calgary, Canada

Strang's Cleaner and Loader

A LOADER, CLEANER and GRAIN TREATER

LOADS and CLEANS GRAIN WITH A CAPACITY
OF 400 BUSHELS PER HOUR

Will Pay for itself yearly on an average sized Farm

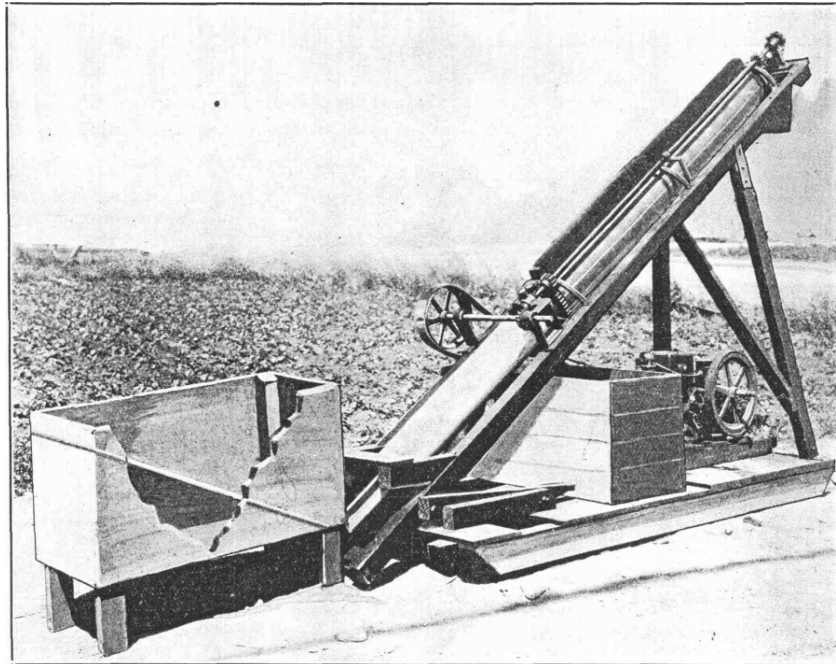
BUILT FOR A LIFETIME OF SERVICE

STRONG AND
DURABLE

THE ONLY
LOADER THAT
CLEANS AS IT
LOADS

RAISES YOUR
GRADE, SAVES
TIME AND
LABOUR EVERY
TIME YOU
HANDLE YOUR
GRAIN

NOT AN
EXPERIMENT.
THOROUGHLY
PROVEN OUT IN
THE LAST FOUR
YEARS



BEST GRAIN
TREATER ON
MARKET

FOR WET OR
DRY
TREATMENTS

FORMALDEHYDE
OR COPPER
CARBONATE

ENGINE NOT
REGULAR
EQUIPMENT BUT
CAN BE
SUPPLIED.

THE STRANG ROTARY GRAIN CLEANER AND LOADER, PORTABLE STYLE

Canadian Patents Nos. 257385 and 257780, and U.S. Patents

The grain is elevated by means of a screw conveyor which elevates the grain through a galvanized iron cylinder and then through a spiral wound cylindrical wire screen (European design) which revolves in the opposite direction to the conveyor. The shrunken kernels and dockage sift through the revolving screen, are caught and discharged by gravity into the box shown underneath the screen. The clean grain is elevated through the entire length of the screen and discharged into your granary or wagon.

The equipment includes a hopper bottom box into which the grain is discharged from the wagon for cleaning and loading purposes or for unloading from wagon to car.

The wagon, after being driven into position for unloading the hopper is then put into place as shown in the picture. The cleaner and Loader can be set in any position to discharge into a car or granary.

It can also be reversed to load from the Granary to the wagon by cutting a small opening in the side of the granary next to the floor and putting a slide to regulate the flow of grain.

The brushes shown keep the screen clean, and revolve by friction with the screen.

IF IT'S A "STRANG" YOU KNOW IT'S THE BEST

Manufactured and Sold Exclusively by

Strang's Rotary Grain Cleaner Ltd. - Calgary, Canada

String's Rotary Grain Cleaner and High Loader

3 **A LOADER, CLEANER and GRAIN TREATER** **3**
LOADS and CLEANS GRAIN WITH A CAPACITY
OF 400 BUSHELS PER HOUR
IN WILL PAY FOR ITSELF YEARLY ON AN AVERAGE SIZED FARM, ELIMINATING HANDLING CHARGES AND LABOR, AND REDUCING DOCKAGE TO A MINIMUM. **IN**
1 *Built for a Lifetime of Service* **1**

Manufactured and Sold
 Exclusively by
**Strange
 Rotary Grain
 Cleaner Ltd.**



**136
 15th Avenue East
 CALGARY
 Canada**

A pile of dockage removed in 1½ days operation from two Combines, 400 bu.

**HANDLE YOUR GRAIN IN THE MOST ECONOMICAL WAY WITH A STRANG'S ROTARY GRAIN CLEANER AND TRACTOR
 SAVE YOUR DOCKAGE FOR FEED**

IN an inquiry from "Dod" Fletcher, of Brant, to Al Miller, of Rockyford, as to the performance of a Strang's Rotary Grain Cleaner and Treater, the following letter is what Mr. Miller has to say, also what Mr. Fletcher says, after buying one on Mr. Miller's recommendation.

READ THEM:

BROADACRES FARM

Mr. W. H. Fletcher, Rockyford, Alta., Jan. 21st, 1928.
 Brant, Alta.

Car No. 10.....NO Dockage Car No. 13.....NO Dockage
 Car No. 11.....1 % Dockage Car No. 14.....NO Dockage
 Car No. 12.....1 % Dockage

Dear Mr. Fletcher:

I am pleased to answer your letter I received today, relative to the Strang Grain Cleaner.

You ask me what I think of the machine and I will gladly say that I think very highly of it. As to its capacity, I cannot positively say just what that is, but this Fall we have threshed at the rate of 250 bushels per hour and more, yet the machine handled the amount and did a good job of cleaning. I am sure that it will handle all that a 40 in. Separator will thresh in wheat—perhaps not in oats. We had some very dirty grain that I feel sure had more than 10 per cent of weed seeds, mostly pig weed and buckwheat, which this machine cleaned to j and 1 per cent. I think this about the machine: WHERE YOU HAVE DIRTY GRAIN IT IS INDISPENSIBLE AND PAYS FOR ITSELF SEVERAL TIMES OVER in the size of the crop such as you raise. The Separator that I have this machine on, is a 40 in. Rumely.

The Strang Grain Cleaner is very well built, and I cannot see but that it will last as long as the Separator, say that both start out together. I have had no trouble with it this fall, threshing about 36,000 bushels, and have about 10,000 or 12,000 to thresh yet.

I WOULD NOT BE WITHOUT THIS MACHINE SO LONG AS I RUN A SEPARATOR AND HAD DIRTY GRAIN TO THRESH.

Thanking you for giving me the opportunity of giving a good machine a deserved boost, and wishing you continued prosperity in the New Year, I am,

Yours truly,

(Sgd.) A. W. MILLER.

P.S. — Since writing the above I find I am wrong where I mention ½ and 1 per cent above. I have before me the record of 14 cars on which we have returns so far and I will list the Inspectors dockage on each. Car No. 1 is the first car shipped, AND THE STRANG CLEANER WAS NOT ON THE SEPARATOR WHEN THIS CAR WAS THRESHED. You will note the big difference:

Car No. 1.....6 % Dockage (Cleaner not in use)	Car No. 4.....2 % Dockage
Car No. 2.....1½% Dockage (Cleaner used on this and balance of cars)	Car No. 5.....1 % Dockage
Car No. 3.....2 % Dockage	Car No. 6.....1 % Dockage
	Car No. 7.....2 % Dockage
	Car No. 8.....1½% Dockage
	Car No. 9.....NO Dockage

I might add that had I just known how to use the machine I might have had the dockage down to what the last cars show. And [all that there was to do to make the machine do its best work was to elevate the screen at a slightly steeper angle than the way I used it at the start, or rather for the cars up to No. 8. Also this change took only a minute or so to do. —A.W.M.

Brant, Alta., June 20th, 1928.

STRANG'S ROTARY GRAIN CLEANER'S LTD., Calgary, Alta.

Gentlemen:

After purchasing and using one of your high loaders and cleaners in the spring of 1928, on my 1927 crop, which lay on the ground all winter, we are more than pleased with the results obtained, and we feel it our duty to express ourselves to the farmers of this country regarding the results and benefit derived from the use of the Strang Rotary Grain Cleaner and Loader.

We threshed 22,000 bushels of wheat this spring, a portion of which was damaged by hail and frost. After elevating it through your loader and cleaner, we got No. 4 wheat for it, the best grade we were offered for it before running through the elevator and cleaner was No. 6 wheat and feed. We saved approximately 2600 bushels of feed—this would be dockage, which we would have received little or nothing for if left in the grain. We also saved the freight and handling charges, which amounted to \$520.00 and we sold 1,465 bushels of this dockage and are keeping the balance for hog feed. We estimate that the Strang Rotary Grain Cleaner and Loader has made a saving to us in one season's operation of several times its cost. We would also like to call your attention to the labor and time-saving of this machine. This spring we cut and thrashed with two combines and this machine cleaned and elevated it into a portable elevated bin, which made it possible for us to load our trucks in a few minutes.

Taking all the advantages of this loader into consideration, we would not think of being without it, and can heartily recommend it as a loader and cleaner to any one, especially to the farmer using a COMBINE HARVESTER.

(Signed) W H. (Dad) and F. L. FLETCHER.

Brant, Alberta.

It Is Almost Unbelievable—But These are Government Figures!

Nearly SIX MILLION bushels of DOCKAGE transported with 1925 crop. In actual figures, 5,782,881 bushels—equal to 95 train loads of 60 cars per train.

These are the latest figures available and show vividly what the farmer has been losing in the past from dockage alone as a result of not cleaning his grain at the farm. The year prior to this the dockage -was almost the same, namely, 5,202,710 bushels—equal to 86 trainloads of sixty cars per train. These figures are net and represent the dockage after separation of other domestic grains.

The enormous freight bill on these screenings paid by farmers on an average rate basis from Regina to Ft. William would total approximately \$916,600.00 and from Alberta points would be considerably larger. Now take into consideration the fact that the elevators and grain companies will not handle ONE BUSHEL OF GRAIN OR DOCKAGE WITHOUT MAKING CHARGES for same, 2¼c per bushel being the elevator charges alone. This approximately amounts to \$130,114. Add this to the freight charges and it makes \$1,046,714. In addition to this, figure the feed value of the screenings at only \$10.00 a ton, and it is worth several times this to you for stockfeed, and we can add another \$1,703,950, making a total of \$2,750,664, and by no means does this cover the total loss to farmers through needless shipments of screenings. The loss in grain value alone due to lower grades is stupendous and has not been taken into account. Surely you realize the money you are throwing away each year when you fail to clean your grain before shipping. Surely you realize where the farmers' profits have been going. Don't delay any longer—Do the sensible thing— Clean your grain before you ship, and for the cost of the Cleaner alone you get a cleaner, loader and grain treater.

You don't need any further facts to see that you should have a Strang Cleaner and Loader. It loads and cleans in one operation. It saves you time and labor; It will clean out the cracked kernels, small wheat and weeds, etc., and enable you to get a better grade and price for the grain you sell. It will save your dockage for stock feed; save the hauling of the dockage and elevator charges besides the freight on it to Ft. William.

In other words you don't have to pay out your money to dispose of your dockage but you have your screenings on your own farm without expense for your stock and it is worth real money to you. Buy a Strang Cleaner and Loader and get returns from ALL YOUR CROP. It is recommended and endorsed by all who have used it.

Read What Some of Our Users Have to Say

Mr. J. T. Ingles, of Rosebud, Alberta, under date of December 23rd, 1926, says:—

During the season of 1926 I used your Rotary Dockage Remover. All the grain is now shipped and it graded No. 2 straight with no dockage. The dockage screen in the shoe of the separator was removed and the pan was closed up entirely, elevating all dockage to the Rotary Dockage Remover, the dockage being taken out by the machine and used on the farm for hog feed. This makes a considerable saving in the value of feed and also in freight.

We have been well aware of the fact that we have been shipping too much dockage for the past years, but the question was to get a satisfactory machine to remove this dockage. I believe that your Rotary Dockage Remover is the most practical machine ever put on the market for this purpose. The machine is so constructed that it is automatically operated, causing me no trouble during the entire season, during which time I threshed approximately 15,000 bushel of grain.

I can heartily recommend this machine to anyone having use for a machine doing this class of work.

Mr. W. D. Trego, of Arrowwood, Alberta, says in part:—

After having used one of your cleaners on my Separator the past season, I am thoroughly convinced that the machine is the best and most economical that I have seen on the market.

I believe that it will take out dockage so closely that there will be no dockage taken by any Government Inspector when grain has passed through this machine where there is a large amount of wild oats.

I am fully convinced that in a short time this invention will stop the haulage of dockage from the farm to the Coast and to the Lake terminals.

Mr. E. A. Keller, of Cayley, Alberta, under date of November 24th, 1926, says:—

We have just finished threshing recently and had one of your Rotary Dockage Removers on from start to finish and think it a big success which will soon save the price of itself. For instance, on three hundred acres of frozen wheat, we got about three hundred bushels of shrunken kernels and wild oats which had passed the separator sieves and went through the weighter. Now that alone would convince anyone of the advantage of having your Cleaner on the Separator.

Messrs. Miller & demons, of Broadacres Farm, Rockyford, Alberta, under date of February 25th, 1926, say:—

We have used your Rotary Dockage Removing machine on our 40-64 Rumely Separator the entire season of 1925, handling just about 40,000 bushels of grain, mostly wheat, and we are of the opinion that this machine should be on every separator.

It will, without doubt, save millions of dollars annually to grain raisers in removing dockage that at present farmers pay freight on to terminals and for which they receive little or nothing.

Even under the difficult conditions prevailing last fall, your machine did very satisfactory work.

We are very much pleased to recommend your Rotary Dockage Remover to anyone operating a grain separator.

Mr. J. E. Robinson, Superintendent for the Blackfoot Fanning Company at Cluny, under date of July 28th, 1927, says:—

"We have used one of your Loaders and Cleaners (Portable Type) at our farm for the past two years and handled about 40,000 bushels of grain with it each year. There was no dockage on any of the 1925 crop put through your machine and only a small portion of our shipments suffered dockage this year and that was all on account of sprouts and frost."

Read What Our 1927 Customers Have to Say

WHAT MR. J. B. BRYSON, OF TISDALE, SASK., HAS TO SAY WITH REGARD TO STRANG'S ROTARY GRAIN CLEANER UNDER DATE OF DECEMBER 1st, 1927:

"I installed one of your Rotary Grain Cleaners on a 24-40 White Separator this fall and the result spelled success in every detail.
"Its performance in Barley was on an equal with that of Wheat and in both cases dockage was reduced to a minimum.
"The Cleaner was the first of its kind used in this district and those who saw it work and those who examined the work done by it concluded it to be an asset to every fanner, and should be installed on every separator.
"From a financial standpoint your cleaner has FULLY PAID FOR ITSELF THIS SEASON, IN THRESHING MY OWN CROP ALONE, viz., the freight charges on dockage combined with the amount of real good feed left at home, which I am now converting into milk and pork.
"Money could NOT BUY THIS MACHINE IF ANOTHER WERE NOT AVAILABLE, and I can heartily recommend it to anyone.
"It also raised the grade of my wheat and barley and made an excellent job in oats, and I also know who is going to reap the benefit from the dockage in my crop this season.
"AGAIN, I heartily recommend your cleaner and trust you will continue the good work."

I am. Yours respectfully,

J. B. BRYSON.

WHAT MR. R. A. DYSON, OF TUDOR, ALTA., UNDER DATE OF OCTOBER 8th, 1927, HAS TO SAY WITH REGARD TO STRANG'S ROTARY GRAIN CLEANER:

"It may be of interest to you to know about what success I have had with one of your cleaners. I have been threshing hauled grain that had shrivelled green wheat in it. The green kernels made it go No. 4. After putting on one of your Cleaners, which took out the green kernels, it graded No. 2.
"I am enclosing samples of the two grades for your inspection."

Yours truly,

R. A. DYSON.

MR. J. C. COLWELL, BLACKIE, ALTA., UNDER DATE OF NOVEMBER 25th, 1927:

"I purchased Strang's Commercial Grain Cleaner this year, and I have cleaned most of 10,000 bushels of my grain. I have about 300 bushels of dockage which I have chopped already, and am feeding hogs with same.
"As a loader and cleaner I do not think Strang's Rotary Grain Cleaner can be beat."

Yours truly,

J. C. COLWELL.

MR. WM. JOLLEYMORE, UNDER DATE OF NOVEMBER 22nd, 1927:

"I have just finished two weeks of threshing out of the snow and used one of your Cleaners, and we found that it removed all the snow that was left in the grain by the separator.
"The dockage spout would sometimes be half full of snow, and it would have been impossible to thresh without leaving the grain in a tough condition had we not had one of your cleaners to remove the snow as well as the dockage."

Yours truly,

WM. JOLLYMORE.

MR. FRED BRAUNBERGER, OF BEISEKER, ALTA., WRITES AS FOLLOWS:

October 1st, 1927.

"We installed one of your Rotary Grain Cleaners on our 36-55 Aultman-Taylor separator this fall and have now used it for fifteen days with the best of results.

"I am thoroughly convinced that the Cleaner has raised the grade of my grain as well as supplied me with a considerable amount of feed in the way of dockage. We have threshed for a number of our regular customers and all have nothing but the highest praise for the machine."
Yours truly

FRED BRAUNBERGER.

STRANG ROTARY GRAIN CLEANERS, LTD.,

Calgary, Alta.

Wayne, Alta., January 3rd. 1928.

Gentlemen:

I bought one of your Loaders and Cleaners in Fall of 1926; after using same for the seasons of 1926 and 1927 am more than pleased with the work done. It is one of the greatest Loaders I have ever seen, as well as Cleaner.

I am satisfied that every day I used it that it paid for itself and can recommend **one to** any farmer who has grain to load and clean.

(Sgd.) J. F. SNYDER & SONS.

DOCKAGE LOSS ON WESTERN CANADA'S 1926 CROP.—WHAT SHIPPING SCREENINGS COST FARMERS.

We submit figures covering the dockage transported in all grain receipts at Fort William, Port Arthur, Vancouver and Prince Rupert terminal elevators, as for the last crop year, August 1st, 1926, to July 31st, 1927. The figures below give the total tonnage of screenings shipped in Western Canadian grain for the last crop year:

Total of all shipments.....	20,925,071,840 lbs.
Total amount of dockage.....	357,305,450 lbs.

This means 5,955,091 bushels of screenings, or a total of 178,653 tons of screenings. This is equal to 991 trainloads of 60 cars per train, with an average load of sixty thousand pounds (30 tons) to the car.

We have the originals on file.